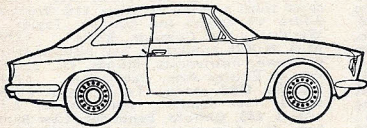


# HEXAGON

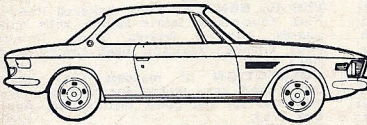
26 NORTH HILL,  
HIGHGATE, LONDON N.1  
01 348 5751  
01 340 3431

## New cars

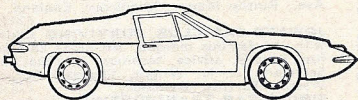
PERSONAL EXPORT SERVICE  
AVAILABLE



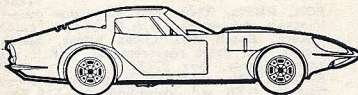
MAIN AGENTS  
**ALFA ROMEO**  
1300 GT JUNIOR, RED



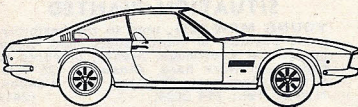
MAIN AGENTS  
**BMW**  
2800A. WHITE  
2800 CS. MAROON  
2002 AUTO. GREEN



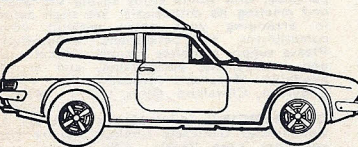
MAIN AGENTS  
**LOTUS**  
EARLIEST DELIVERY OF KIT  
EUROPA  
ELAN SPRINT, +2S 130. RED



DISTRIBUTORS  
**MARCOS**  
3-LITRE — COLOUR CHOICE

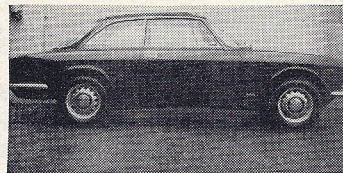


SOLE UK DISTRIBUTORS  
**MONTEVERDI**  
MONTEVERDI 375L, PRUSSIAN  
BLUE



DISTRIBUTORS  
**RELIANT**  
SCIMITAR GTE AUTOMATIC,  
GREEN

## Used Cars



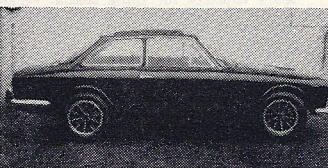
1970 'J' reg. ALFA ROMEO  
1750 GTV. Finished in white, black  
trim. Fitted new tyres all round;  
cassette player. One owner, 15,000  
miles. £1,995.

1969 'H' reg. ALFA ROMEO  
1750 GTV. Finished in red, black  
trim. Fitted radio. A superb one-  
owner example. £1,795. Similar car  
available in royal blue.

1969 BMW 2800 CS coupe.  
Finished in metallic blue, black  
trim. Fitted Blue Spot radio, electric  
windows. Exceptional. £3,395.

1969 'H' reg. CRAYFORD Cor-  
tina 3-litre 'E'. Finished in auber-  
gine, black trim. Dunlop alloy wheels  
One owner, 24,000 miles. £1,295.

FERRARI 365 GT 2+2, first regis-  
tered 1969. Finished in red, tan hide  
trim; self-levelling suspension, power  
steering, radio, h.r.w.; 19,000 miles.  
£5,995.

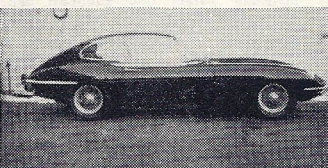


1970 FORD Capri 3000 GT XLR.  
Finished in orchid with black bonnet  
and trim. Fitted radio. 9,000 miles;  
exceptional throughout. £1,245.

1970 GILBERN INVADER. Metal-  
lic brick red, overdrive, sun-roof,  
electric windows; one owner, 15,000  
miles. £1,445.

1968 GILBERN Genie. Silver fox,  
black trim, electric windows, alloy  
wheels, overdrive; 26,000 miles.  
£1,145.

1970 JAGUAR 'E'-Type 2+2.  
Fitted manual transmission, c/w/ws,  
sun-roof, Radiomobile, h.r.w. Fin-  
ished in red with black trim. A one-  
owner car, 19,000 miles. £2,495.



1970 JAGUAR 'E'-Type f.h.c.  
Finished in pale blue with dark blue  
trim. Fitted Radiomobile, c/w/ws,  
h.r.w.; one owner, 8,000 miles.  
£2,345.

1969 JAGUAR 'E'-Type 2+2.  
Finished in Carmen red with black  
trim. Fitted chrome wire wheels,  
Radiomobile, h.r.w.; 19,000. £2,195.

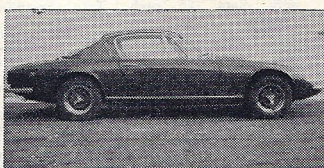
1969 JAGUAR 'E'-Type 2+2.  
Finished in B.R.G. with tan hide trim.  
Fitted chrome disc wheels, radio,  
h.r.w.; one owner. £2,195.

1968 JAGUAR 'E'-Type 2+2,  
Series 2. Primrose, black. Pearce  
mag. wheels, radio, h.r.w., wing  
mirrors; 25,000 miles. £1,995.

1968 JAGUAR 'E'-Type 2+2.  
Finished in silver blue, dark blue trim.  
C/w/ws, h.r.w., p.b. radio; 25,000  
miles. Superb. £1,795.

1970 LOTUS +2S. Finished in  
royal blue, black trim. Fitted p.b.  
radio, Sundym screen, wing mirrors;  
5,000 miles, as new. £2,095.

1970 'J' reg. LOTUS Elan S4 S/E  
f.h.c. Carnival red, black trim.  
Immaculate one-owner car, 7,000  
miles. £1,495.



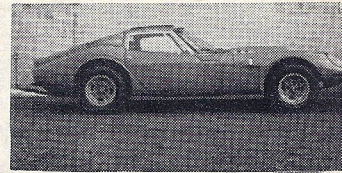
1970 LOTUS Elan S4 S/E d.h.c.  
Lotus yellow, black trim; one  
owner, 12,000; as new. £1,445.

1970 MARCOS 3-litre V6. Tan-  
gerine, black trim. Sun-roof, mag.  
alloy wheels, radio, stereo; 20,000  
£1,595. Similar 1969 'H' reg.  
example finished in white, registra-  
tion No. DDH 1 H. £1,545.

1969 M.G.-C GT. Finished in  
mineral blue, black trim. Fitted  
reclining seats, overdrive, wire  
wheels, h.r.w., rear seat. Immacu-  
late, £1,245. Similar 'H'-registered  
car, 5,000 miles.

1969 'H' reg. M.G.-B roadster.  
Finished in white, black trim. Fitted  
reclining seats, o/d., w/ws, p.b.  
radio, spotlights, leather wheel.  
Available with Bermuda hard-top.  
One owner. £1,095.

1968 M.G.-C roadster, auto-  
matic. Mineral blue, black trim.  
Wire wheels, tonneau, radio; one  
owner, 27,000. £945.



1959 M.G.-A Twin-Cam. Finished  
in mineral blue. £400 just spent in  
our workshops, has to be seen. £595.

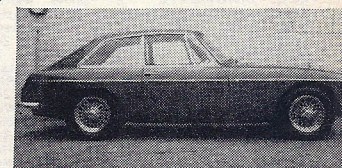
1970 PORSCHE 911S. Signal  
orange, black trim. Sundym glass,  
steel sun-roof, electric windows,  
Blue Spot radio; 10,000 miles.  
£4,445.

1969 PORSCHE 911E. Finished in  
blue, white trim. Sundym glass,  
h.r.w.; 19,000 miles. £3,395.

1971 RELIANT Scimitar. White,  
black trim. Fitted radio, o/d., sun-  
roof, h.r.w.; less than 4,000 miles.  
£2,195.

1970 'J' reg. RELIANT Scimitar  
GTE. Golden sand, black trim.  
Radio, o/d; 4,000 miles. £2,095.

1970 'J' reg. RELIANT Scimitar.  
Finished in red, black trim. Auto-  
matic transmission. Radio, h.r.w.;  
one owner. £2,095.

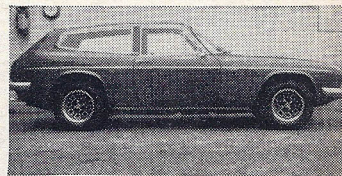


1970 RELIANT Scimitar GTE.  
Finished in satin silver, black trim.  
Fitted overdrive, radio and stereo  
cassette player, h.r.w.; one owner,  
13,000 miles. £1,895. Similar car  
available in Manhattan blue.

1969 RELIANT Scimitar GTE.  
Choice of three selected guaranteed  
examples, in white, satin silver and  
Manhattan blue. From £1,645.

1968 TRIUMPH TR5 roadster.  
Finished in white. Fitted hard- and  
soft-tops, w/ws and o/d. £1,095.

1969 UREN SAVAGE 'E'. 170-  
b.h.p. engine, Zodiac gearbox with  
overdrive, heated rear window. Blue  
mink, black trim. Cost new over  
£2,000. £1,295.



Any car taken in part exchange  
Insurance and hire purchase available

Personal export arranged  
Late low mileage sports cars bought for cash