

GOLD SEAL

CAR COMPANY LTD.

For selected sports and performance cars



MAIN AGENTS

253-255 New Cross Rd.
London, S.E.14.
Tel: 01-639 3204/5/6

SELECTION FROM STOCK

£4,250 JENSEN Interceptor, 1969. Cirrus white with black interior; 11,500 miles; stereo tape/radio; full history available. An exceptional car in every respect.

£2,995 ASTON MARTIN DB6, 1967. Silver grey with dark blue trim, manual 5-speed gearbox, Webasto sun-roof, radio, electric aerial and chrome wire wheels.

£1,795 JAGUAR 'E'-Type fixed-head coupé, 1968. Red with black trim, chrome wire wheels, heated rear window, push-button radio, etc.

£1,525 JAGUAR 2+2 'E'-Type fixed-head coupé, 1966. Jaguar dark blue with dove grey leather interior, manual gearbox, Cinturato tyres, radio, etc.

£1,295 JAGUAR 4.2 'E'-Type roadster, 1966. A fabulous-looking car finished in opalescent dark green, fitted new narrow band whitewall tyres, Motorola radio. Must be seen.

£1,295 LOTUS Elan S4 fixed-head coupé, Special Equipment, 1966. Sand with black interior, 5-push-button radio, mag. alloy wheels; one owner, 17,000 miles. Excellent value.

£1,095 LOTUS Elan Special Equipment drophead coupé, Dec. 1967. White with black interior; 21,000 recorded miles, push-button radio.

£1,025 MARCOS GT, 1966, 1500 Ford engine. This car is superbly finished in Jaguar silver blue with black trim, wire wheels, radio. A very well maintained car.

£995 FORD Escort Twin-Cam, 1969. White with black interior, push-button radio.

£995 LOTUS Elan fixed-head coupé, 1967. White with black trim. An excellent spec. includes knock-on wheels, SP tyres, radio, seat belts, etc.

£995 MORRIS 1800 'S', 1969, with 'Crayford' Estate Conversion. White with black interior; 12,000 miles; sun-roof, radio, stereo tape deck, luggage rack.

£945 ASTON MARTIN DB4 Superleggera, 1961. British Racing Green with grey interior, chrome wire wheels, radio.

£895 LOTUS Elan S3 coupé, 1966. White with black trim, centre-lock wheels, radio; excellent condition.

£875 M.G.-B GT, 1967. British Racing Green with black trim, wire wheels, Cinturato tyres, radio. A very original and attractive car which is unmarked throughout.

£845 M.G.-B roadster, 1967. Mineral blue with black interior trim, extras include chrome wire wheels, overdrive and radio.

£845 ALFA ROMEO Giulia Sprint GT, 1965, in Spa white with grey trim. Immaculate.

£825 LOTUS Cortina, 1968. Blue mink with special black roof finish; Rostyle wheels with radial tyres, radio, etc. One of the most attractive Lotus Cortinas we have handled.

£825 M.G.-B roadster, 1968. Old English white with black trim; 10,000 recorded miles; overdrive, tonneau cover. Excellent value.



£765 SUNBEAM Alpine roadster Mk. V, 1968. One of the last of these popular models to leave Rootes factory, finished in mid-green with black interior trim, unmarked throughout.

(*Illus. left*) **£4,150 BENTLEY Mulliner convertible, 1963, S II.** Steel grey over Tudor grey; 46,000 recorded miles; power hood and electric windows, power-assisted steering. A rare car which will maintain a very high value.

£765 LOTUS Cortina, Dec. 1967. Dark blue with gold coach-line. Extremely good condition throughout.

£735 TRIUMPH Spitfire, 1969. White with black interior, fitted hard-top, wire wheels, etc.; 10,000 recorded miles. Immaculate condition throughout.

(*Illus. left*) **£3,675 ROLLS-ROYCE S III, 1964.** Sand and sable with beige leather upholstery, usual extras include electric windows, heated rear window and radio. Whole car in superb condition throughout.

£665 TRIUMPH Spitfire, 1968. Dark blue with black interior; a one-owner car fitted with wire wheels, radio, etc.

£665 TRIUMPH TR4A roadster, 1965. White with black interior, extras include overdrive 2nd, 3rd and top gear, wire wheels, radial tyres.

(*Illus. left*) **£1,795 JAGUAR 'E'-Type roadster, 1968.** Old English white with black interior, radio, chrome wire wheels; excellent condition, having had only one owner.

£645 LOTUS Seven, 1968. Ford 1,300-c.c. engine. Offering economy with performance and usual Lotus road-holding, finished in Lotus yellow.

£645 M.G.-A Mk. II fixed-head coupé, 1961. Having only covered 19,000 miles from new, this must be the best 'A' offered anywhere; one owner and virtually as new. White with red interior, wire wheels, spots, etc.

(*Illus. left*) **£1,745 MERCEDES 230SL roadster, 1964.** Attractively finished in conifer green with tan interior, manual gearbox, power steering, soft-top; recommended.

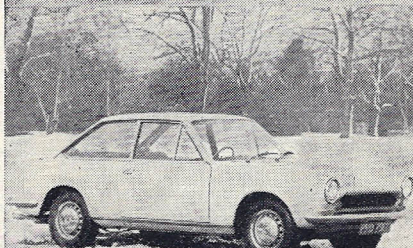
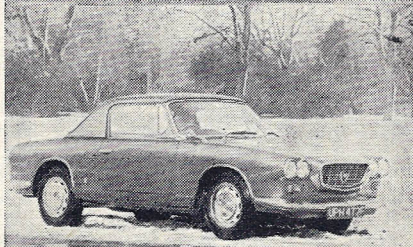
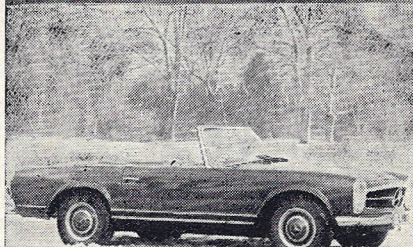
£625 TRIUMPH Spitfire Mk. III, 1968. A very well maintained car finished in dark blue with black trim, tonneau, heater, etc.

£595 LOTUS Super Seven, 1966. Ford 1500 engine, Elan wheels, with Avon tyres; superbly finished in Lotus yellow.

(*Illus. left*) **£1,695 LANCIA Flavia convertible, 1966.** Mountain blue with red interior; 19,600 recorded miles, one owner; hard- and soft-tops, radio, etc. A very attractive car which has the great advantage of being able to seat four persons.

(*Illus. below left*) **£1,365 FIAT 124 coupé, 1969.** Positano yellow with black trim, 5-speed gearbox, radio, heated rear window. A very desirable 2+2 coupé.

(*Illus. below*) **£1,245 FIAT 2300S Ghia-bodied coupé, 1966.** Having had only two owners from new the car is in exceptional condition, extras include sun-roof, electric windows, etc. Dark blue with contrasting interior.



£575 TRIUMPH TR4 roadster, 1964. Extras include overdrive on 2nd, 3rd and top gear, wire wheels, etc.

(*Illus. right*) **£1,145 MASERATI convertible, 1962.** At present in pewter grey, when this advertisement appears it will be refinished in Sebring white, with blue interior; right-hand drive; radio, etc.; recent engine overhaul at Maseratis.

£495 TRIUMPH TR4 coupé, 1963. Red with black trim, overdrive, radio; excellent condition.

£495 HONDA S800 fixed-head coupé, 1967. One careful owner from new, full history available. Silver grey with black trim; roll-over bar, heater, etc.

(*Illus. right*) **£1,095 BOND EQUIPE 2-litre convertible, 1969, 'H' reg.** Whole car as new having only covered 1,200 miles. White with black trim, overdrive, radio. Substantial saving on new price.

£485 FORD Cortina GT, 1966. Red with black interior, one owner; fitted radio.

£445 TRIUMPH Vitesse convertible, 1966. White with black flash and interior; one of the few convertibles offering a full four seats.

£445 AUSTIN Mini-Cooper, 1967. Almond green and white; one owner; in very good condition throughout.

(*Illus. right*) **£1,085 BMW 1600 fixed-head coupé, 1968.** Carlton grey with black trim. A one-owner example of these very fast and attractive cars.

£445 FIAT 1500 cabriolet, 1961. A rare two-seater drophead, fitted with the very fast o.h.c. Osca engine; left-hand drive. Tweed grey with black trim.

£425 M.G. Midget, 1965. Riviera blue with matching trim, extras include wire wheels, tonneau; two owners from new; unmarked throughout.

£345 TRIUMPH Spitfire, 1963. Green with black interior, fitted with Elan wheels and new G800 tyres, etc.; excellent condition throughout.

(*Illus. right*) **£845 PIPER GT, 'H' reg, 1969.** Green with black trim, fitted 1,000-c.c. 'A' series B.M.C. engine. A fabulous-looking car which is both economical and fast.

£275 AUSTIN Mini-Cooper, 1963. Red and white; recent engine overhaul.

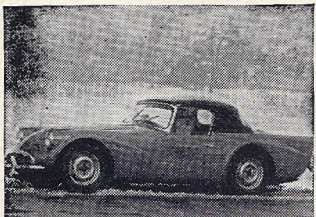
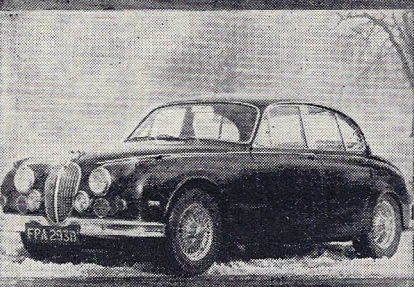
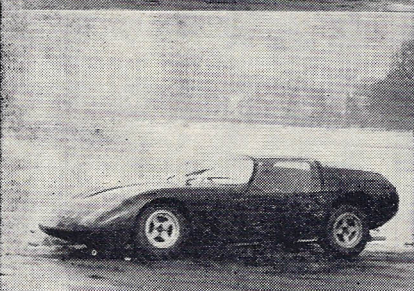
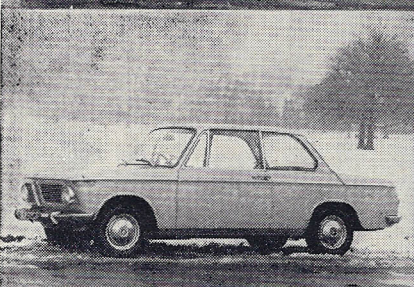
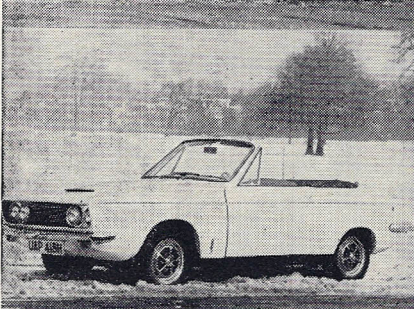
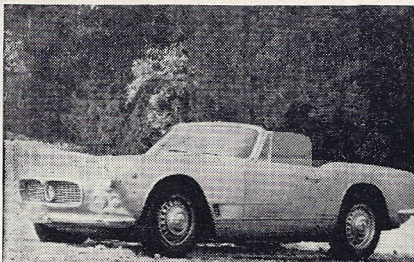
£195 FIAT 500 sun-roof saloon, 1965. White with red trim.

£175 TURNER Sports. 948-c.c. B.M.C. engine; good condition throughout.

(*Illus. right*) **£765 TRIUMPH GT6, 1968, left-hand drive.** Dark blue with matching interior, overdrive on 2nd, 3rd and top gear, sun-roof, radio and twin spots. Thoroughly recommended. Ideal Continental touring.

(*Illus. below right*) **£635 JAGUAR 3.8 saloon, 1965 series.** Extras include chrome wire wheels, overdrive, radio. The car is immaculate in black with red leather interior.

(*Illus. below*) **£565 DAIMLER Dart SP250, 1963.** Monza red with grey trim, fitted black detachable hard-top, etc.



AVAILABLE SHORTLY

£1,345 JAGUAR 'E'-Type roadster, 1966. Indigo blue with red leather trim, chrome wire wheels, push-button radio, etc.

SUNBEAM-TALBOT 90 Mk. III, 1956. Blue with grey interior, 36,000 miles, three owners; radio. A truly concours winner.

DAIMLER SP250, 1961. TRIUMPH TR3A, 1959. Wire wheels, overdrive, hard-top.

PERSONAL EXPORT ENQUIRIES ON ALL NEW CARS HANDLED QUICKLY AND EFFICIENTLY. WE SPECIALISE IN ALL ASPECTS OF PERSONAL EXPORT SALES, FROM INSURANCE, SHIPPING, AND INFORMATION ON EXPORT/IMPORT FORMALITIES.

NEW CARS

LOTUS & GOLD SEAL. Two names that are synonymous with quality high-performance motoring. Contact us now for all your Lotus requirements. Available shortly subject to being unsold: Europa S2, yellow; Plus Two 'S', red; Elan S4 d.h.c., S/E., red or white. Elan S4, Europa S2 and Plus Two 'S' demonstration cars available at all times for your trial and inspection.

DO NOT WORRY—EVEN IF YOU DID NOT BUY YOUR NEW OR USED LOTUS FROM US YOU CAN STILL ENJOY OUR EXCELLENT SERVICING FACILITIES.

EARLY DELIVERY of the following **LOTUS:**

LOTUS Elan f.h.c., S/E., royal blue/black trim, h.r.w.

LOTUS Elan d.h.c., S/E., cirrus white.

LOTUS Elan d.h.c., Lotus yellow.

LOTUS +2 'S', h.r.w., chrome wheels. To be specially finished to customer's choice.

LOTUS Europa, Lotus yellow/black trim.

LOTUS Europa, Carnival red/black trim, radio, etc.

LOTUS Europa, cirrus white, power brakes.

IMMEDIATE DELIVERY:

M.G.-C GT, pale primrose/black trim, w/w., h.r.w., o/d.

M.G.-B GT, flame red/black trim, w/w., o/d., radials.

M.G.-B GT, Bermuda blue/black trim, w/w., o/d., h.r.w.

M.G.-B GT, Bermuda blue/black trim, automatic, SPs, Rostyle wheels.

M.G.-B roadster, glacier white/black trim, w/w., o/d., SPs, t/c.

M.G.-B roadster, flame red/black trim, w/w., radials.

M.G.-B roadster, B.R.G., Rostyle wheels, SPs.

M.G.-B roadster, flame red/black trim, radials, w/w., o/d., t/c.

M.G. Midget, royal blue/black trim, t/c., a.r.b.

EXCELLENT SERVICING FACILITIES

IMMEDIATE DELIVERY:

MINI-COOPER 1275 'S', red and black.

MINI-COOPER 998, antelope/black trim.

MINI-COOPER 998, red/black trim.

MINI-COOPER 998, glacier white/black trim.

MORRIS MINI 850 saloon, glacier white/black trim, heater.

EXCELLENT SERVICING FACILITIES

OPEN DAILY 9.30 a.m. — 8 p.m.

SATURDAYS 9.30 a.m. — 7 p.m.

SUNDAYS 10 a.m. — 5 p.m.

GOLD SEAL RACING TEAM

We will this season again be entering our Spitfire in Modsports to be driven by Peter Long, a new GT6 specially built in aluminium which will be driven by Peter Cox, and a space-frame Group 6 sports/racing car as yet to be named, to be driven by Chris Marshall. There will possibly be future additions to our team in due course.

"Last season was good for us but this season is going to be brilliant."

GOLD SEAL

CAR COMPANY LTD.

For selected sports and performance cars



MAIN AGENTS

253-255 New Cross Rd.

London, S.E.14.

Tel: 01-639 3204/5/6