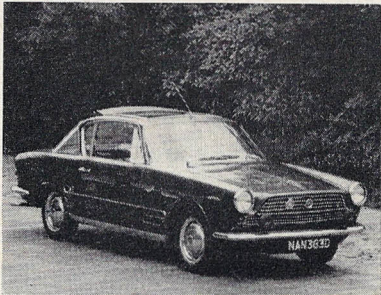


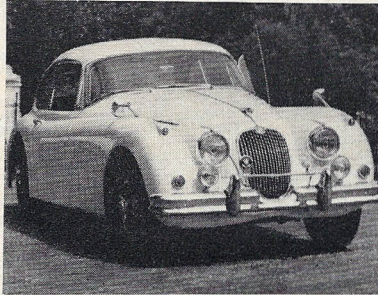
GOLD SEAL CAR COMPANY LIMITED

253-255, New Cross Road, London, SE 14 Telephone: 01-639 3204/5/6

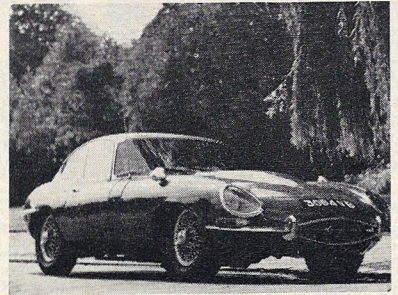
The sign of constant GT and sports car quality from England's leading sports car dealers



£1,345 FIAT 2300 'S' f.h. coupe, 1966, Ghia body. Cobalt blue with black trim, electric windows, sun-roof; two owners.



£415 JAGUAR XK150 f.h.c., 1958. Ivory with red trim, wire wheels, overdrive.



£795 JAGUAR E-Type f.h.c., Dec. 1962. Red with grey trim. SP Sport tyres.

NEW CARS



All new LOTUS models very early delivery, excellent terms and service. Demonstrations without obligation by appointment anywhere London area. Specialists in personal export. Prompt and efficient service. Contact us for all your LOTUS requirements.

Contact us now as we may have what you want.



M.G.-B GT. White, wire wheels, overdrive, SP tyres.
M.G.-B GT. Black, wire wheels, SP tyres.
M.G.-B Roadster. Red, wire wheels, overdrive, SP tyres.
M.G.-B Roadster. Red, overdrive, SP tyres.
M.G. Midget. Red, SP tyres.
M.G. 1300 Mk. 2. Faun brown, 100 m.p.h. saloon.

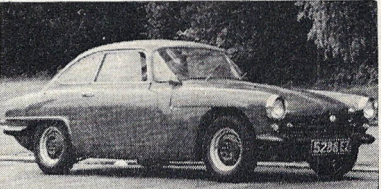
MORRIS

MINI-COOPER 998. Elpaso beige/white.
MINI-COOPER 998. Sandy beige/white.
MINI-SUPER 1000. Blue, grey trim.
MINI TRAVELLER 1000. White with wood battons, automatic.
1800 "S". White, black trim, power steering, reclining seats.
1300 TRAVELLER in grey.

PERSONAL EXPORT ENQUIRIES ON ALL NEW CARS HANDLED QUICKLY AND EFFICIENTLY. WE SPECIALISE IN ALL ASPECTS OF PERSONAL EXPORT SALES. FROM INSURANCE, SHIPPING, AND INFORMATION ON IMPORT FORMALITIES.



£1,175 ALFA ROMEO Duetto, 1967. Spa white with red trim; one owner from new; radio, Cinturatos.



£395 TORNADO Talisman GT, 1962. Maroon with black trim. One of the few GTs that will seat four people in comfort; 1340 Cosworth engine.

£3,465 ASTON MARTIN DB6, 1967. Olive green, with natural hide interior, automatic, power steering, chrome wire wheels, electric windows and aerial, twin-speaker radio, Sundym glass. Excellent condition throughout.

£2,675 ASTON MARTIN DB6, 1966. Pacific blue with natural tan interior, automatic transmission.

£2,565 V8 PONTIAC Firebird convertible, 'G' reg. Primrose with black hood and black interior, automatic transmission, power steering, F.M. radio, whitewall tyres.

£2,545 ISO GRIFO Bizzarrini, 1965. A fabulous 180-m.p.h. GT car fitted modified 400 b.h.p. Stingray unit, mag. wheels, etc. A very rare car costing nearly £8,000 new.

£1,965 MERCEDES 230SL, 1964. Jade green with beige interior, white hard-top, soft-top, automatic transmission, power steering, radio, etc.

£1,795 MARCOS 3-litre. White with black trim, wire wheels, overdrive, electric windows, radial tyres, etc. 1,200 miles. 'H' reg.

£1,695 LOTUS Elan +2. Burnt sand with black trim, radio, Halda Speed Pilot; one owner from new. Supplied by us.

SEE AND TRY THE LATEST RANGE OF LOTUS PRODUCTS AT BRANDS HATCH

Telephone or write in for details sent by return post

£1,695 LOTUS Elan +2, 1968 'F'. Dark blue with black interior, fitted with push-button radio, etc. First class condition throughout.

£1,645 LOTUS Elan +2. White with black trim; recorded mileage 12,000.

£1,545 JAGUAR 420 saloon, 1967. One owner, 13,000 recorded miles, chrome wheels, overdrive, radio, etc., Webasto roof.

£1,065 M.G.-B GT, 'F' reg. Primrose with black trim, chrome wire wheels, overdrive, SP tyres; one owner. Supplied by us.

£1,025 ALFA ROMEO Giulia Sprint GT, 1966. Spa white with red trim, Cints.

£1,025 LOTUS Elan f.h.c., 1966. Medici blue, knock-on wheels; two owners; history known.

£995 ASTON MARTIN DB4, 1961, in B.R.G. with beige trim; an excellent example.

£995 M.G.-B GT, 1968. Tartan red with black trim, radio; one owner.

£995 M.G.-B roadster, 1967 'F' reg. Mineral blue with black trim, chrome wire wheels, overdrive, Bermuda hard-top, etc.

£995 M.G.-C roadster, 'F'. Primrose with black trim, wire wheels, overdrive, radio; recorded mileage 13,000.

£995 JAGUAR 'E'-Type, 1964. Metallic blue.

£975 T.V.R. Vixen 1600, 1968. Gold with black trim, wide wheels, G800 tyres.

£965 FIAT 2300 Automatic saloon, 1967. Petrol blue with red trim, radio, reclining seats, power steering, brakes, etc.: 12,000 miles approx.

£935 M.G.-B GT, 1967. White with black interior, fitted overdrive, wire wheels, radio, etc.

£925 M.G.-B roadster, Oct. 1967, 'F' reg. Mineral blue with black trim, wire wheels, overdrive, radio, tonneau cover, Cints., etc.

£895 FORD Lotus Cortina, 1968. Blue mink with black trim, new radial tyres; one owner.

£865 LOTUS Cortina, 1967 'F' reg. Lotus colours, twin spots, leather wheel, Motorola radio.

£735 TRIUMPH TR4A Dove GT f.h. with occasional four seats. White with green flash and black trim, wire wheels, radio, new SP68 tyres.

£725 JAGUAR 3.4, 1966 model. Golden sand with red leather; one owner from new; manual overdrive.

£765 LOTUS Elan, 1964. Silver grey with black trim, hard- and soft-tops, push-button radio, etc.

£695 SINGER Chamois Sport, 1967 (Sept.). Hartwell Stage II engine, sun-roof, Minilite wheels, reclining seats, etc. Very fast.

£595 JAGUAR 3.4 saloon, 1964. Pale blue with red hide trim, overdrive, radio, Cints. Excellent value.

£575 LOTUS Cortina, 1965. Lotus white with green flash and black interior, etc.

£555 LOTUS Cortina, 1964. Lotus colours; a superb example.

£545 M.G.-B roadster, 1963. Ice blue, hard- and soft-tops, wire wheels.

£535 TRIUMPH Spitfire Mk. II, 1966. Wire wheels, hard- and soft-tops.

£495 M.G.-B roadster, 1964. B.R.G. with black trim, radio.

£495 LOTUS Cortina, 1963. Lotus colours, fitted leaf-spring rear end, radio; a superb example.

£495 TRIUMPH Vitesse convertible, 1966. White with black interior.

£485 FORD Cortina GT, 1965, 4-door. White with black trim.

£415 M.G.-A 1600 f.h. Petrol blue with black trim, fitted spot lamps, luggage carrier, SP Sport tyres, etc.

£395 TRIUMPH Spitfire, 1963. Wedgwood blue with dark blue interior, hard-top and overdrive.

£395 M.G. TF 1250. B.R.G. Good value.

£395 SUNBEAM Alpine, 1963. Green with black trim, overdrive, wire wheels.

£385 SUNBEAM Alpine, 1963. Iris blue with black trim, overdrive, wire wheels, Brabham-balanced engine.

£365 RENAULT Caravelle, 1964. Hard- and soft-tops.

£365 TRIUMPH TR4, 1962.

£365 FORD Anglia. A fully trimmed road car fitted 1,500-c.c. unit, T.J. fuel injection, c/r. all-synco. box, Konis, servo disc brakes, wide wheels, etc. Fantastic performance.

£355 M.G. Mk. II, 1953. Black with green interior.

£335 M.G.-A roadster, 1959, 1,600 c.c. Red with black trim; well above average throughout.

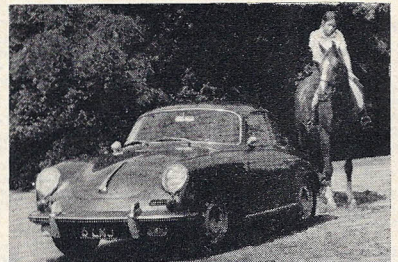
£325 AUSTIN Mini-Cooper, 1964. White and black.

£295 AUSTIN Mini-Cooper, 1963. Smoke grey with white roof, wide wheels, etc.

£295 MINI Make, 1965. New hood, sidescreens, etc.

£195 DAIMLER Consort saloon, 1951. Black with red trim, radio; an exceptional car which has been extensively overhauled recently.

£165 CANNON Trials Car.



£995 PORSCHE 356C, 1963-4 model f.h.c. Opalescent blue with black interior, fitted with radio, etc. Fantastic condition in every respect. Highly recommended.



ENGLAND'S LEADING SPORTS CAR DEALERS — CONSULT US FIRST, THE PEOPLE WHO REALLY KNOW SPORTS CARS, FOR THE BEST ADVICE, TOP SERVICE AND, OF COURSE, A FIRST CLASS DEAL



Ass: New Cross Motor Co., Ltd.

OPEN DAILY 10 a.m.—8 p.m. SATS. 9.30 a.m.—7 p.m. SUNS. 10 a.m.—5 p.m.