

# GOLD SEAL SPORTS CARS

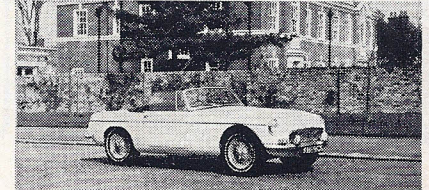
253-255, New Cross Road, London SE14. Tel: 01-639 3204



**LOTUS Plus Two 'S', 1969.** Lime green with black roof and trim. Fitted radio. 17,000 recorded miles. Chrome wheels, tinted glass, etc. **£1,795**



**ISO RIVOLTA, 1964.** V8 5.3-litre engine. Wide wire wheels, electric windows, radio, etc. Two owners. Recent clutch and engine overhaul. A real eye-catcher. **£1,295**



**M.G.-C roadster, 1969.** Snowberry white with black trim. Fitted wire wheels, SP sports with narrow band white walls. Faultless. **£965**



**TRIUMPH GT6, 1967.** White with black trim. Extras include wire wheels, overdrive, radio. **£665**

## SELECTION FROM STOCK

**JAGUAR 4.2 'E-Type Series II roadster, 1969.** Finished in jet black with red leather interior. Fitted radio, etc. A really smooth-looking car. **£1,845**

**RELIANT Scimitar GTE.** Finished in satin silver with black trim, fitted overdrive, radio, h.r.w., rear wiper, s/belts, etc. **£1,665**

**LOTUS Elan S4 convertible, 1970, S/E model.** Blue Royale. Fitted radio. One owner. Supplied by us; low mileage. **£1,445**

**TRIUMPH TR6, 1969.** Finished in damson with black trim. Fitted wire wheels, overdrive, radio. Nice condition throughout. **£1,295**

**TRIUMPH TR6 roadster, 1969.** Cirrus white with black trim. Fitted radio and wire wheels. **£1,265**

**LOTUS Elan S/E d.h. coupé, 1969.** Lotus yellow with black trim. A very attractive car in excellent condition. **£1,245**

**LOTUS Elan S4 f.h.c., 1969, S/E.** Finished in royal blue with black interior. Fitted radio. Good condition throughout. **£1,195**

**ALVIS, Mulliner Park Ward saloon, TE21.** Finished in British Racing Green with beige leather interior, fitted automatic gearbox, power steering, wire wheels, radio, etc. A first-class example in every respect. Recorded mileage 39,000 miles. **£1,195**

**M.G.-B GT, 1968G, Mk. 2.** Synco. gearbox. In jet black with red interior. Fitted overdrive, radial tyres, seat belts, twin spots, h.r.w.; 20,000 recorded miles. **£1,065**

**M.G.-B GT, 1968G.** White with black interior. Wire wheels, sun-roof, radio, air horns, synchromesh gearbox. Good condition throughout. **£1,035**

**LOTUS Elite, 1970.** Probably the finest example in existence. Built 1970 from mostly new parts and only done 1,600 miles since. ZF box, w/w. Primrose with black trim. **£995**

**JAGUAR 'E-Type f.h.c., 1965.** Primrose with black trim. Fitted radio, wire wheels, etc. Good condition throughout. **£965**

**M.G.-B roadster, 1968.** B.R.G. with black trim. Synchromesh gearbox. Excellent throughout. **£895**

**TRIUMPH Spitfire, 1970.** Red with black trim. Extras include overdrive, hard-top, radio. Very low mileage. One owner. **£895**

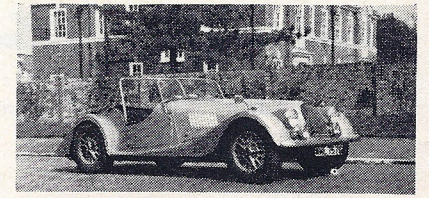
**M.G.-B roadster, 1968.** Finished in red with black trim. Fitted wire wheels, overdrive, radio, etc. **£895**

**FORD LOTUS Cortina, 1969.** Silver fox with black trim. **£885**

**M.G.-C roadster, 1968, 'G' Reg.** B.R.G. with black trim. Wire wheels, overdrive, tonneau, etc. Full history from new. Supplied by us. **£885**

**LOTUS Elan S.2 special bodied fixed-head coupé.** A superb looking car finished in flame red. **£845**

**RELIANT Scimitar, 1966.** Finished in gold with contrasting interior. Fitted with overdrive, wire wheels, radio, etc. **£845**



**MORGAN +8, 1969.** Silver with black interior, tonneau cover, luggage rack. Good condition throughout. **£1,545**

**ALFA ROMEO GTC, 1966,** in Valencia blue with tan trim, radio, etc. An ideal 4-seater convertible attractively finished. **£825**

**AUSTIN HEALEY 3000, 1966,** in dark blue and white, new hood, wire wheels, radio, radial tyres, spot lamps. **£825**

**M.G. Midget, 1969, 'H' Reg.** Primrose with black trim. Wire wheels, radio, reclining seats, etc. 13,000 miles recorded. **£765**

**VOLKSWAGEN 1,600 c.c. 'S' Karmann Ghia.** Finished in blue with contrasting trim. P.b. radio. Two owners. In very good condition throughout. **£725**

**M.G.-B GT, 1967, L.H. drive.** Chrome wire wheels, overdrive, radio, radial tyres. Requires some paintwork. **£695**

**FIAT 1500 convertible, 1966.** Mid-blue with tan trim. 5-speed gearbox, power brakes. One titled owner for four years. A rare car in superb condition. **£685**

**MINI COOPER 1275 S, 1968.** Tweed grey and white. Special seats. **£645**

**1964 TRIUMPH TR4 coupé hard-top.** Finished in conifer green with black trim. Fitted overdrive. Excellent condition throughout. **£595**

**AUSTIN Heavy Twelve saloon, 1929.** A very fine car in near original condition. Dark blue body, black wings and interior. **£595**

**MORRIS Mini Cooper, 1969.** Island blue and white. One owner. **£595**

**AUSTIN Mini Cooper 1275 S, 1967.** Specially finished in aubergine with black roof. Fitted reclining seats, wide wheels, flared arches, etc. **£585**

**FORD Cortina GT, 1966-67 model.** White with black trim. **£575**

**JAGUAR XK140 fixed-head coupé.** Carmen red with matching leather trim. Wire wheels, overdrive. Bills available. **£545**

**M.G.-B roadster, 1964.** Carmen red. Extras include wire wheels, Abarth exhaust, wood-rim wheel, etc. **£535**

**JAGUAR XK150 f.h. coupé, 1958, 3.4.** Sherwood green with matching trim. Three owners. Above average condition. **£495**

**TRIUMPH TR4 roadster, Nov. '63/64 model.** Finished in Sherwood green with black trim. A one-owner car in good condition. **£485**

**NEW LOTUS EX-STOCK OR EARLY DELIVERY PLUS TWO 130. 'S' Limited choice.**

Component cars.  
**SPRINT f.h.c.** Bahama yellow.  
**SPRINT d.h.c.** Carnival red.  
**EUROPA S2.** Cirrus white, power brakes.  
**UNBEATABLE LOTUS SALES & SERVICE**



MAIN AGENTS

**NEW M.G.**  
**M.G.-B GT,** in blaze, HRW, s/belts, radials, overdrive.  
**M.G.-B Sports,** in glacier white, seat belts, radials, servo, wire wheels, overdrive.  
**M.G.-B Sports** in blaze, overdrive, radials, s/belts.  
**M.G. Midget** in blaze with black trim, Rostyle wheels, radials, tonneau cover.

**UNBEATABLE M.G. SALES AND**



MAIN AGENTS SERVICE

**NEW RELIANT SCIMITAR GTE**  
**ORDERS ARE NOW BEING TAKEN FOR THIS SUPERB CAR. EARLY DELIVERY ON ALL MODELS AUTOMATIC OR MANUAL DEMONSTRATION GTE AVAILABLE BY APPOINTMENT**

**GTE.** Carribean green; overdrive, HRW.  
**GTE.** Nevada yellow, overdrive, HRW.



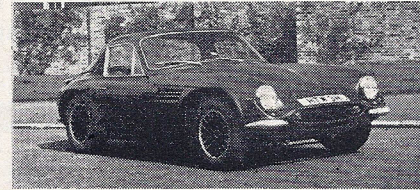
SCIMITAR GTE MAIN AGENTS

**EXPORT—TAX FREE**  
**GOING ABROAD OR VISITING THE U.K.**  
 We will take all the worry out of your hands with our quick and efficient service. Telephone us and find out how inexpensive it is to buy a new car to take with you. Excellent delivery on all models.

**SPECIALISTS IN PERSONAL EXPORT DELIVERIES**



**FIAT Abarth 695 SS, 1965.** Finished in white and red, sun-roof, wide wheels, etc. Must be seen and driven. **£365**



**TVR Tuscan, 1970.** Cobalt blue with black trim. Fitted overdrive, mag. wheels. One owner. Low mileage. **£1,395**



**MORRIS COOPER 1275S Minisprint.** Ice blue. Fitted mag. wheels. A genuine sprint—immaculate throughout. **£695**

Showrooms: Open daily 10a.m.-8p.m. Saturdays 10a.m.-7p.m. Sundays 10a.m.-5p.m. Works & Stores: Open daily 9a.m.-6p.m.