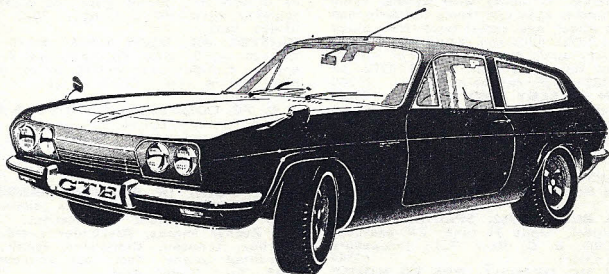


THE CHEQUERED FLAG



The 1970 RELIANT SCIMITAR GTE and 3-LITRE GT. Both of these fine cars are immediately available for your examination and trial. We will be very pleased to demonstrate either of these outstanding four-seater or 2+2 cars at your home or office, whichever is the more convenient. Earliest possible delivery with choice of colours from the **LEADING RELIANT DISTRIBUTORS.** The GTE now has either Automatic Transmission or Manual gearbox with overdrive.

The BOND EQUIPE 2-litre GT or Convertible, choice of colours, from stock.

LOTUS Elan Plus-Two. Unmarked 1968 'F' car in French blue/black trim, Motorola, G800s, k.o. wheels, electric windows, air horns, inertia belts. **£1,495**

Also two 1969 'G' cars to latest spec. in B.R.G. or Bahama yellow, both nominal mileage. **Only £1,695**

TR5, 'G' regd. roadster, finished in unmarked Wedgwood blue, black interior, fitted petrol injection, wire wheels, etc. A one-owner car **at £1,065**

M.G. Midget Mk. III, midnight blue, black trim. A one-owner 1968 car at **£615**

ALFA ROMEO Giulia GT 1600 coupé, sound 1964 car in red, radio, heater, leather wheel, G800s, etc. Twin cam unit, 5-speed box; just overhauled. **£695**

M.G.-B roadster, 1966, finished in black, fitted overdrive, wire wheels, radio. Another in white and gold, **each £715**

LOTUS Elan S2. Choice two 1966 dropheads in silver with black trim, bumpers and k.o. wheels, radio, inertia belts, etc., or pale blue, same spec. **From £795**

RELIANT Scimitar 2.6 GT. Choice of two of these fine straight-six cars, white or silver-blue, both wire wheels, radials, radio, belts; one sun-roof. **From £895**

LOTUS Elan S3, SE. Choice of three cars in blue, yellow or metallic green, one with "engine by B.R.M.", at prices from **£1,145**

CORTINA GT. Outstanding 'F' regd car in red with black roof, trim and coach-line, chromed "Rostyles", radio, G800s, headrests, etc. **£785**

M.G.-B roadster, Old Eng. white, red trim, overdrive, wires, radio, alarm, Cints., leather wheel, special exhaust, etc. 1964. **£565**

SUNBEAM Tiger, first reg. Nov. 1966, one owner from new, finished in B.R.G. and fitted with hard- and soft-tops, radio, Cints., etc. Surely excellent value at **£795**

AUSTIN HEALEY 3000 Mk. III, "SMT IIIIF", in black with black interior overdrive, wire wheels, etc. An outstanding car **at £1,185**

SPITFIRE Mk. III, 'G', unmarked red with black trim, factory hard-top, etc. **£765**
Another in Valencia blue, wire wheels, radio, etc., **at £695**

SUNBEAM Alpine SV. A 1966 car in spotless powder blue and black trim; a fine example of this model. **£565**

RELIANT Scimitar 3-litre GT, 'F' regd., in golden sands, black interior, fitted with overdrive, radio, sun-roof, etc., **at £1,165**

LOTUS Elan, 1964. Attractive in pale yellow with matt black hard-top and bumpers, also soft-top, wood rim, etc. **£695**

M.G. Midget Mk. III, choice two one-owner 'G' regd. cars in primrose with black trim, both wire wheels, etc. **£695**

ROVER 2000 TC. A fine one-owner 'F' regd. car in Zircon blue with grey trim. fitted sunroof, radio, Cints., etc. **£1,095**

TR3A. Excellent 1960 car in dark blue with black trim, fitted overdrive, TR4A carbs., TR5 wire wheels. **£375**

JAGUAR XK150 fixed-head coupé, in pale blue, with overdrive, wire wheels with Cints., radio, wood rim, rack, etc. **£475**

In addition to the cars featured above, we have another 30 new and used sports and GT cars—our stock constantly changes—if you do not see the car that you seek please ring 01-995 0022/3 and we will try and help.

LONDON'S LEADING SPORTS CAR SPECIALISTS

THE CHEQUERED FLAG ENGINEERING LTD.

548-560 Chiswick High Road, London, W.4 Telephone: 01-995 0022/3